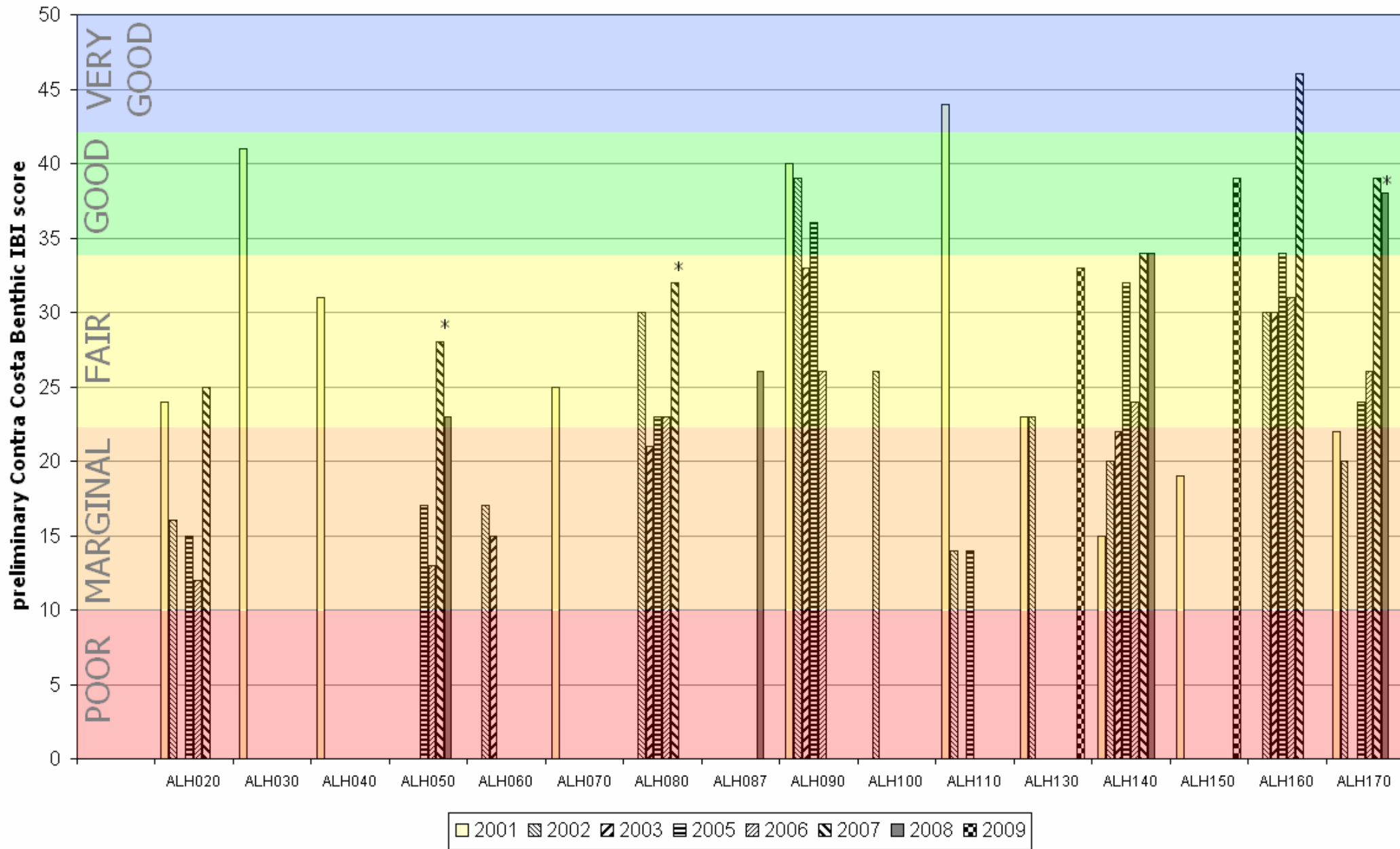
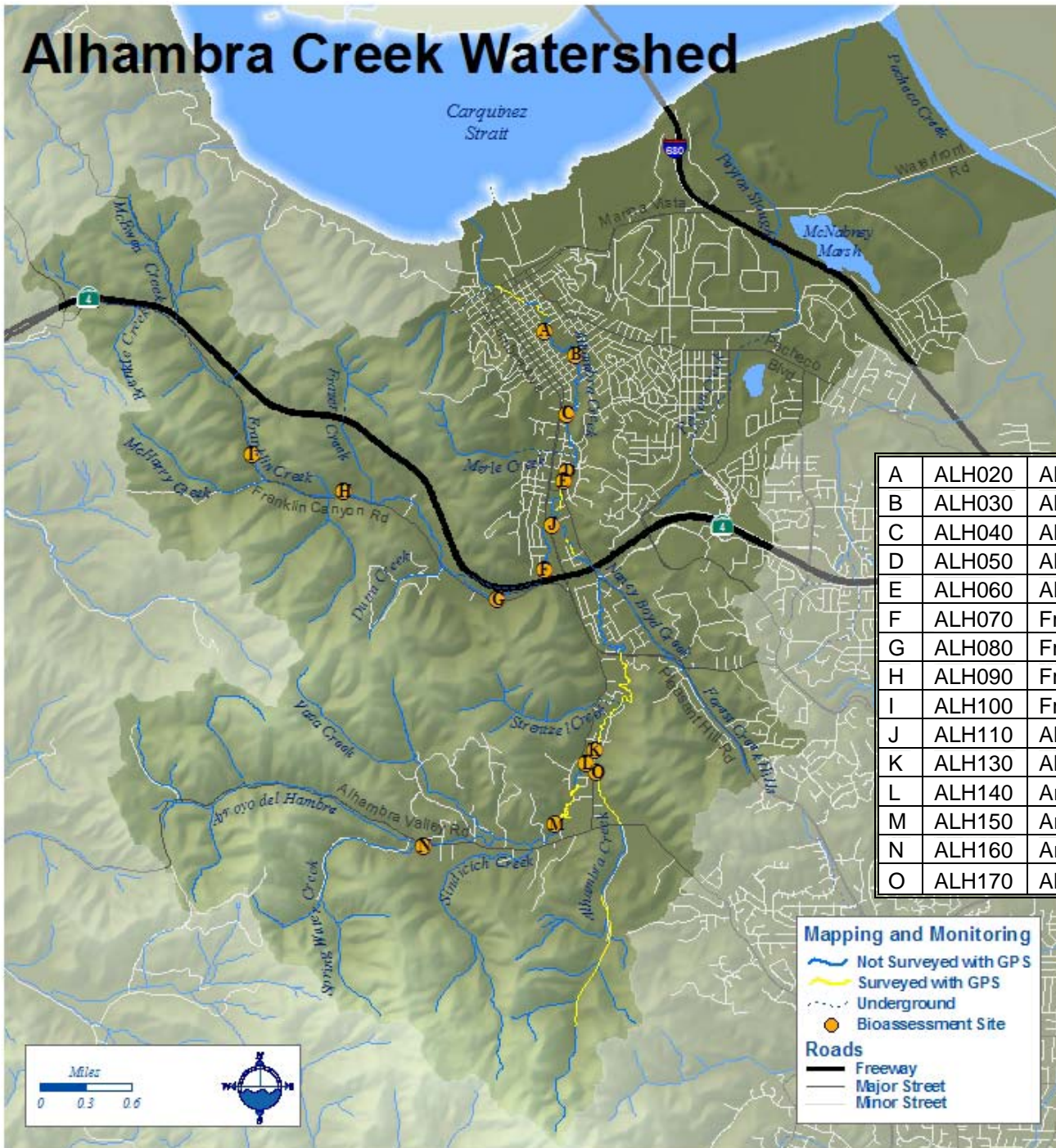
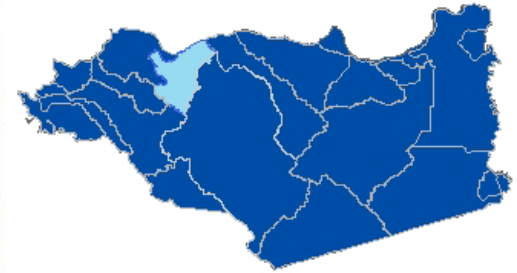


# Alhambra Creek



\* denotes that the sample has fewer than 500 organisms

# Alhambra Creek Watershed



A	ALH020	Alhambra Cr. above Susana St.
B	ALH030	Alhambra Cr. between Soto and Allen streets
C	ALH040	Alhambra Cr. Below D Street
D	ALH050	Alhambra Creek AT Martinez Adult School
E	ALH060	Alhambra Cr. Below Alhambra Way
F	ALH070	Franklin Creek at John Muir House
G	ALH080	Franklin Cr. At 1530 Franklin Canyon Road
H	ALH090	Franklin Cr. at Walcott Lane
I	ALH100	Franklin Cr. above 2700 Franklin Canyon Rd.
J	ALH110	Alhambra Cr. above Franklin Cr.
K	ALH130	Alhambra Cr. below Arroyo del Hambre
L	ALH140	Arroyo del Hambre above Alhambra Cr.
M	ALH150	Arroyo del Hambre Creek at Castle Creek Court
N	ALH160	Arroyo del Hambre above Vaca Canyon Rd
O	ALH170	Alhambra Cr. above Arroyo del Hambre

## Mapping and Monitoring

- Not Surveyed with GPS
- Surveyed with GPS
- Underground
- Bioassessment Site

## Roads

- Freeway
- Major Street
- Minor Street