

# Alhambra GPS Creek Survey Results



# Measure Habitat

## 50' Interval Vital Signs

### Human Influence



### Invasives / Vegetation

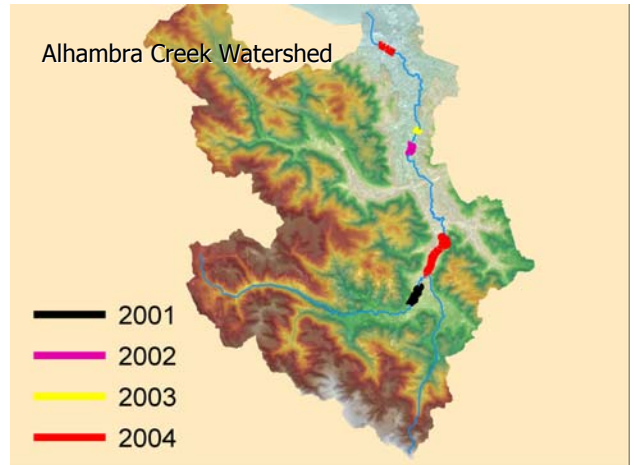


# Why Monitor the Creek?

- ✓ Current Status
- ✓ ID Problems
- ✓ Track Changes



# Alhambra Creek Watershed



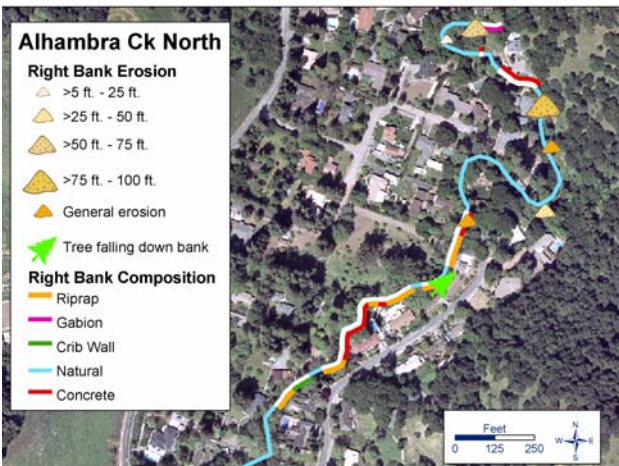
## Alhambra Ck North

### Right Bank Erosion

- △ >5 ft. - 25 ft.
- △ >25 ft. - 50 ft.
- △ >50 ft. - 75 ft.
- △ >75 ft. - 100 ft.
- △ General erosion

### Right Bank Composition

- ▲ Tree falling down bank
- Riprap
- Gabion
- Crib Wall
- Natural
- Concrete



## Alhambra Ck South

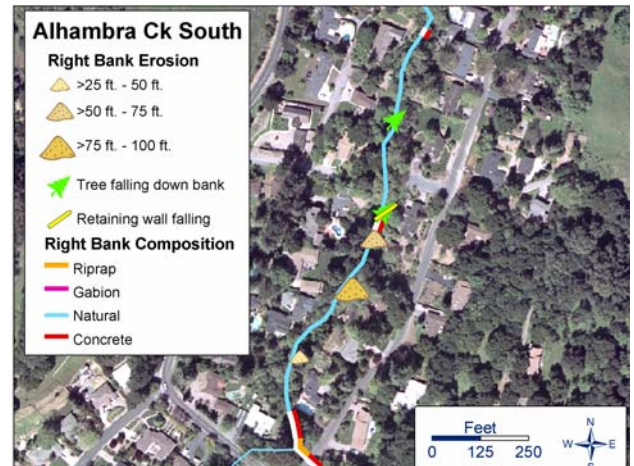
### Right Bank Erosion

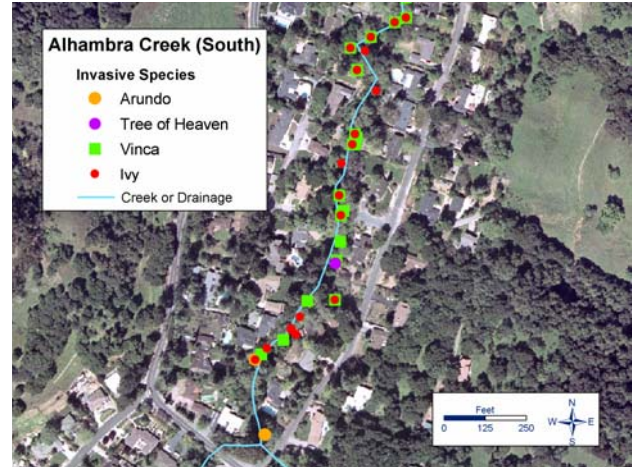
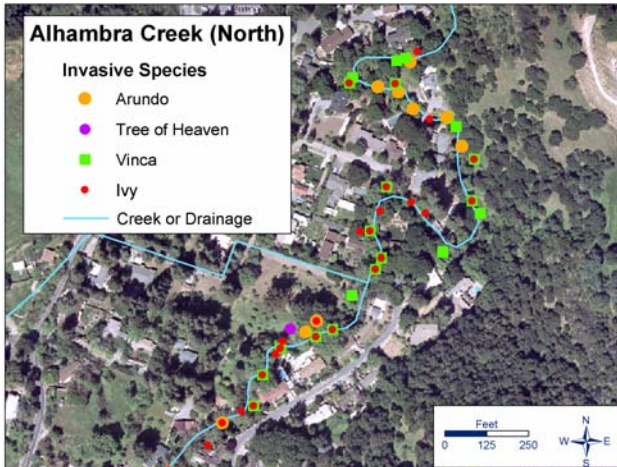
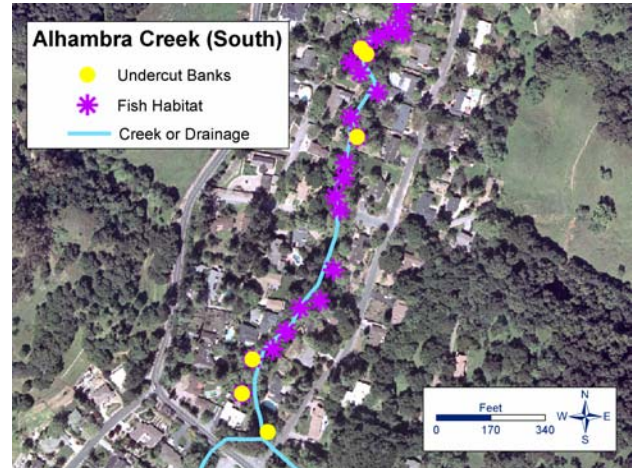
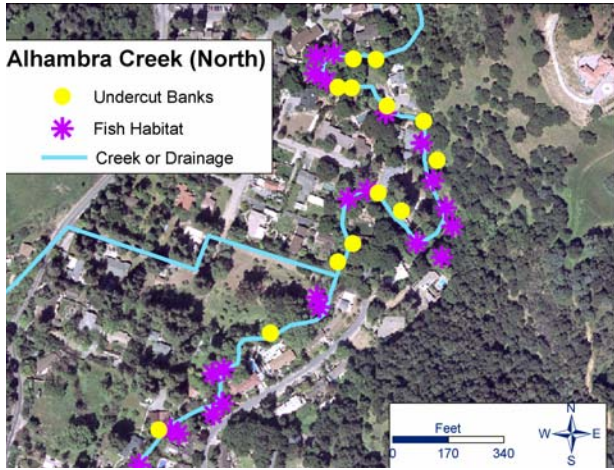
- △ >25 ft. - 50 ft.
- △ >50 ft. - 75 ft.
- △ >75 ft. - 100 ft.

- ▲ Tree falling down bank
- ▲ Retaining wall falling

### Right Bank Composition

- Riprap
- Gabion
- Natural
- Concrete





## Why Use Volunteers?

- Able to Compliment Professional Data
- Low Cost Labor Source
  - Local Knowledge
  - Vested Interest
- Increase Awareness to Empower Stewardship

