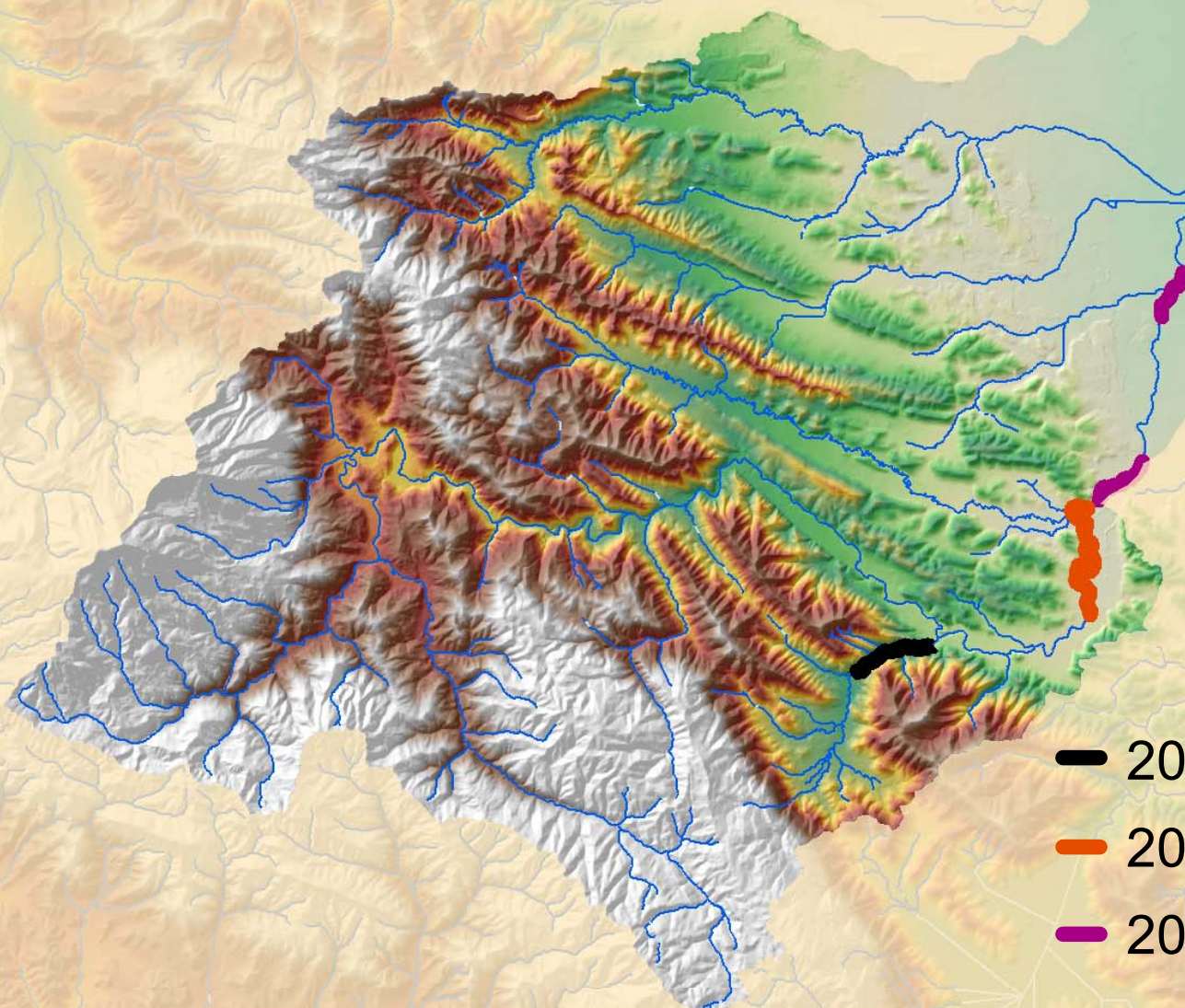


GPS Reaches Surveyed in Upper / Lower Marsh Creek Watershed



- 2001 Round Valley
- 2001 Upper Marsh
- 2002 Lower Marsh

GPS Creek Survey

Human Influence



50' Interval Vital Signs



Invasives / Vegetation



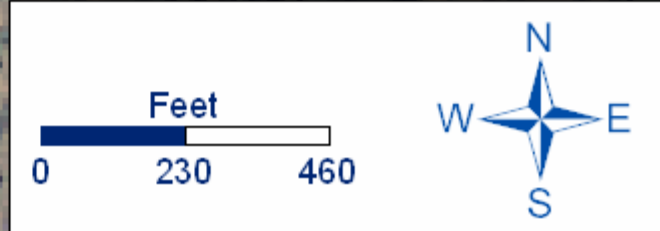
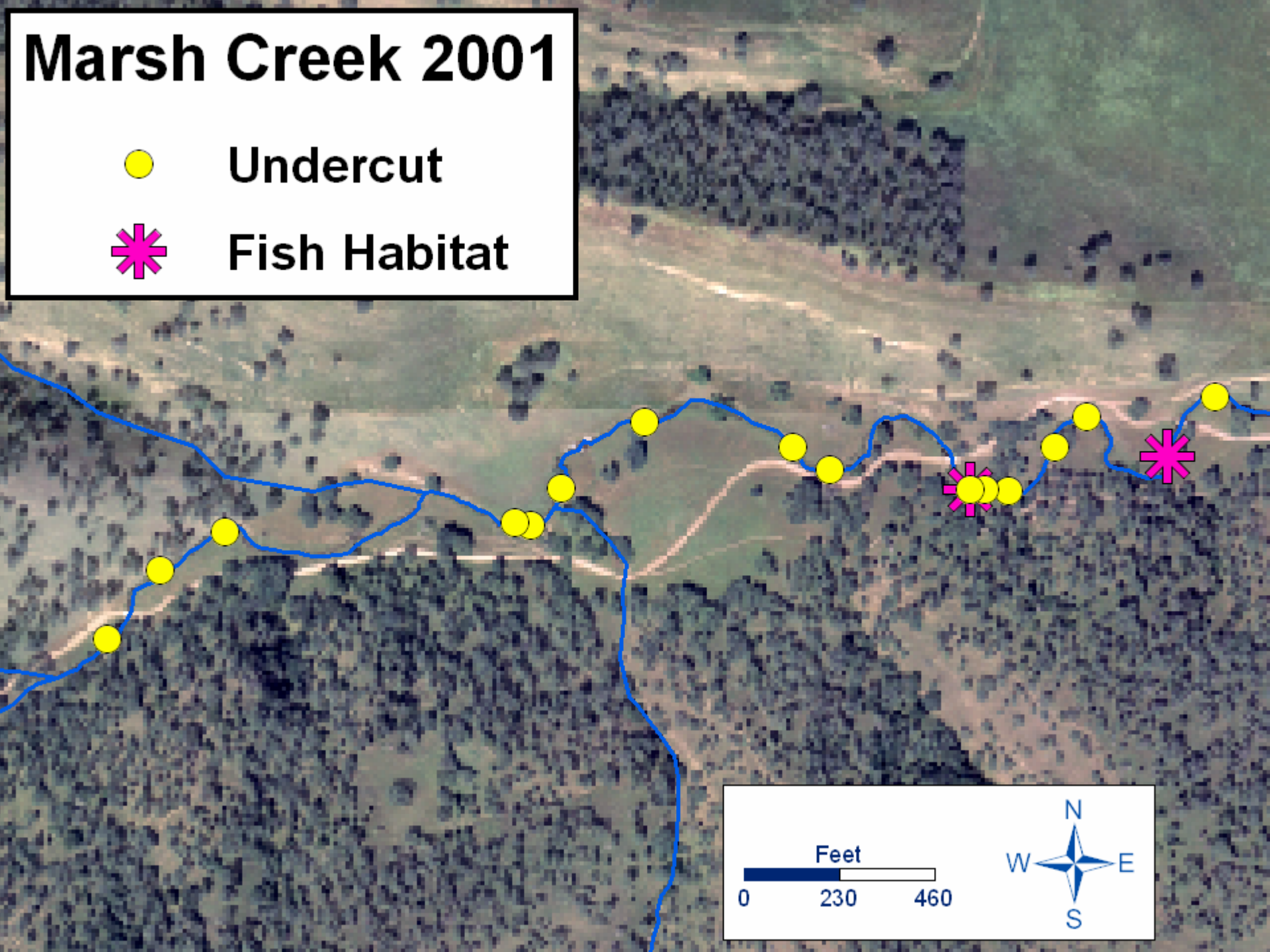
Why Monitor the Creek?

- ✓ Current Status
- ✓ ID Problems
- ✓ Track Changes



Marsh Creek 2001

- Undercut
- ✱ Fish Habitat



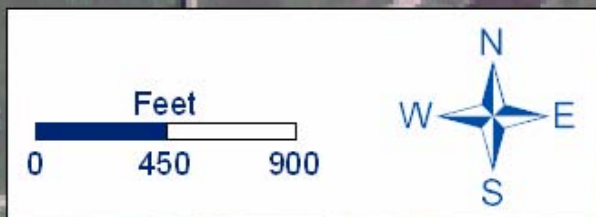
Marsh Creek 2001



Undercut



Fish Habitat



Marsh Creek 2002

* Fish Habitat

● Undercut



Marsh Creek 2002

Invasives LB



Giant Thistle



Other





Star Thistle




Marsh Creek 2002

Right Bank Invasives

 Giant Thistle

 Star Thistle

 Other



Why Use Volunteers?

- **Able to Compliment Professional Data**
- **Enthusiastic Help**
- **Local Knowledge**
- **Vested Interest**
- **Able to Advocate for Watershed Protection**
- **Increase Awareness**

