

# GPS Creek Surveys

## Human Influence

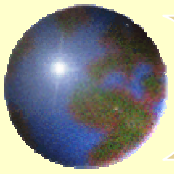


## 50' Interval Vital Signs



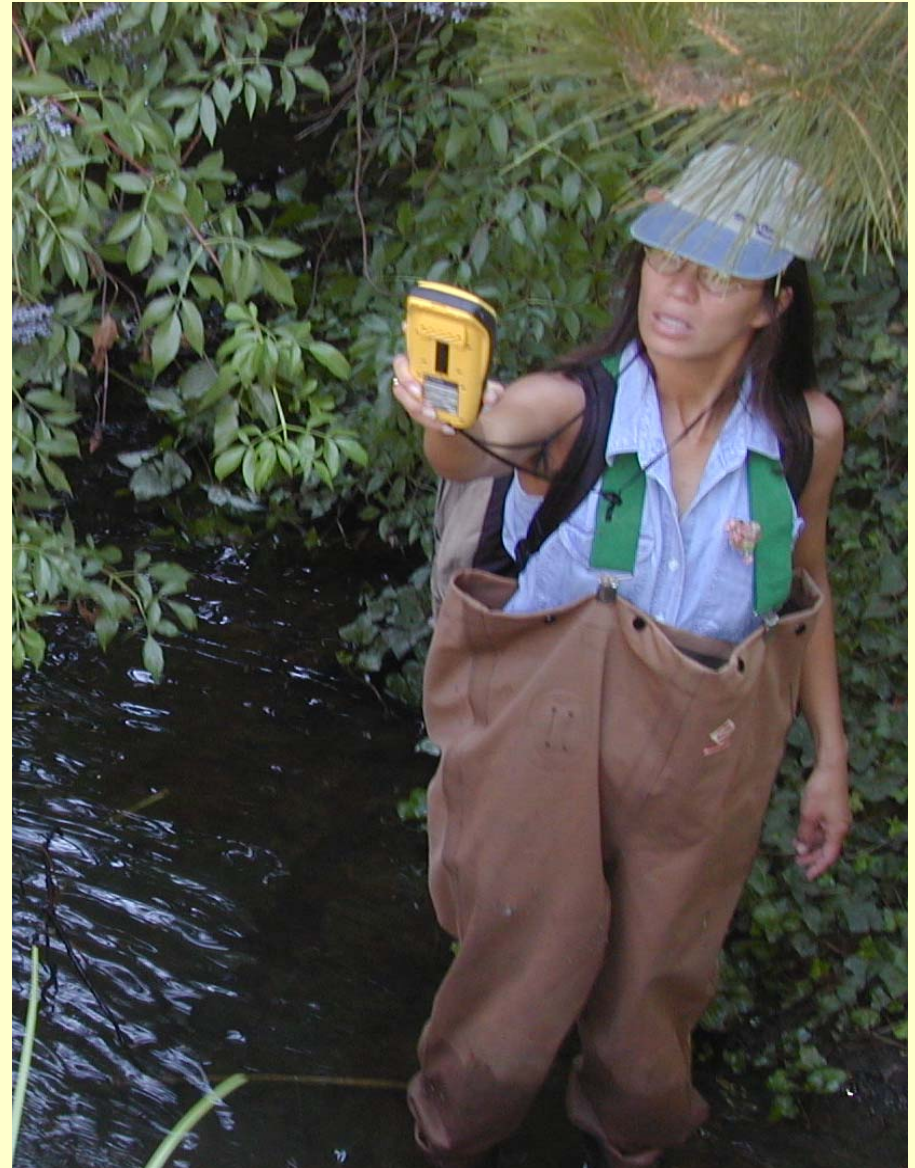
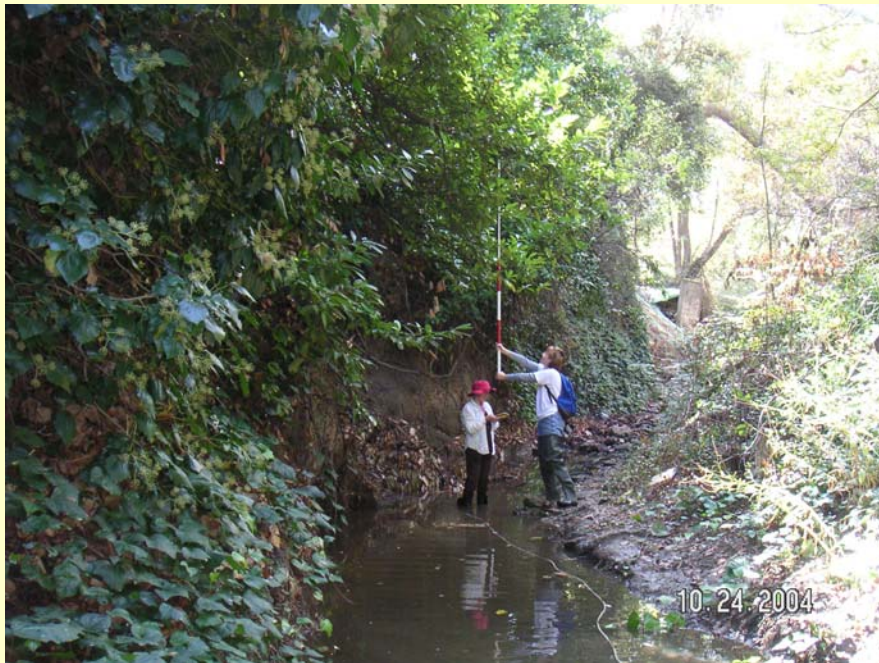
## Invasives / Vegetation



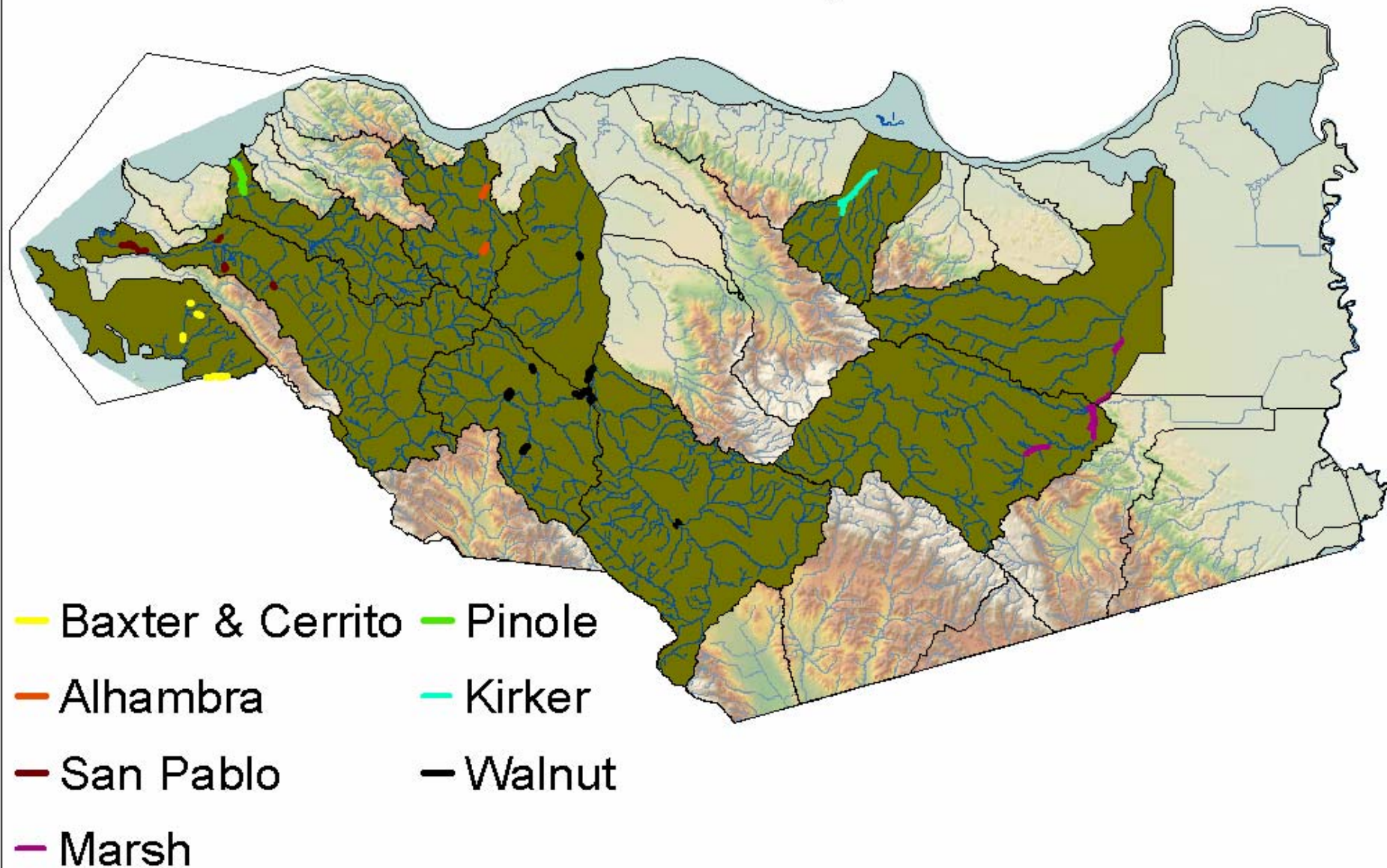


# Why Monitor the Creek?

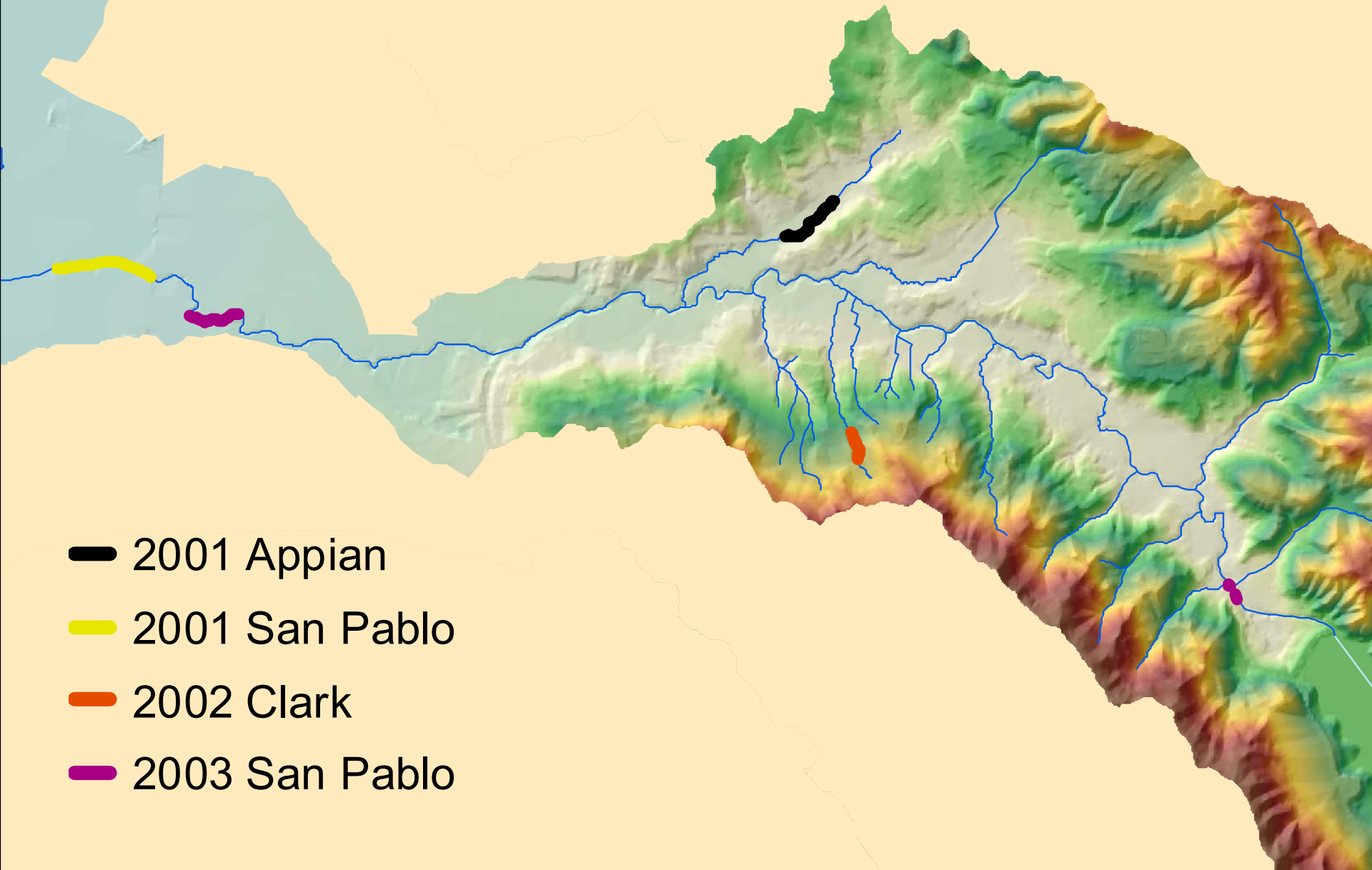
- ✓ Current Status
- ✓ ID Problems
- ✓ Track Changes
- ✓ Have FUN!!!!



# Locations of Watersheds Surveyed with GPS



# GPS Reaches Surveyed in the San Pablo Creek Watershed



- 2001 Appian
- 2001 San Pablo
- 2002 Clark
- 2003 San Pablo